

GAZZDA

Ava Chair

Product sheet

design by
Salih Teskeredžić



Ava Chair

Product facts

Materials

Body	Solid oak
Backrest	Oak veneer
Finish	Hardwax oil / lacquered
Seat	Oak veneer / leather or fabric upholstery

Technical features

Body

Ava's body is made out of solid wood, while the bent backrest is made out of thin veneer slices of high-quality oak. Product elements are connected with characteristic and visible wedged mortise and tenon joints. Felten gliders are attached to the legs and are suitable for most flooring options. The seat is attached to the body through matte black plastic seat spacers.

Seat

Three material options for a seat are available: as a form-pressed veneer seat or as leather or fabric upholstered options. For further information please see "Available materials" section at the end of this document.

Finish

Available in three plant-based Hardwax oil finishes (colors), which retain the wood's natural state (white, natural and smoked oil) or as a black lacquered option.

Cleaning

Please see [Product](#) or [Material](#) page on our website.

Standards and certifications

Ava Chair fulfills the requirements of standard BAS EN 16139:2014 + BAS EN 16139/Cor1:2014 Furniture - Strength, durability and safety - Requirements for non-domestic seating.

Notes to consider

Variations

Natural variations in wood color and surface may occur. Regular maintenance will ensure the wood preserves its authentic beauty and can last for generations.

Product changes

Please note that Gazzda reserves the right to alter construction and design without notice.

Dimensions (tolerances)

The dimensions shown are indicative, they may vary due to the natural properties of wood, season, or manufacturing processes. Deviations from the specified size may occur, usually no more than 1 cm.

For all additional inquiries regarding Ava Chair please feel free to [contact us](#).

Ava Chair

Base Solid Oak, Backrest Oak veneer, Seat Upholstered / Oak veneer

Version: 20-9-2024

Basic info

Design Salih Teskeredžić

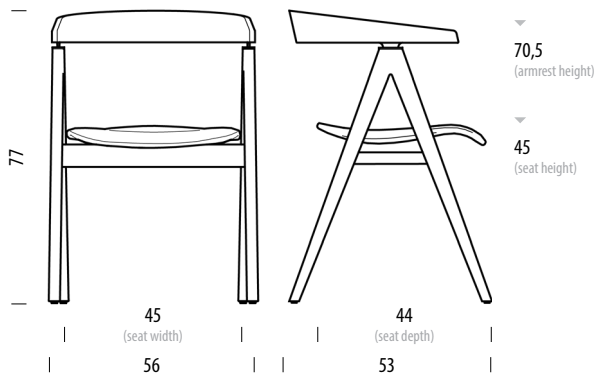
Product size W: 56, D: 53, H: 77

Packaging W: 58, D: 58, H: 80

Volume 0,27 m³

Net weight 6,3 kg

Gross weight 8,9 kg



Item no. 0FE / 1CA

Assembled product

Dimensions	Width	Depth	Height
Seat	45	44	45
Armrest			70,5

Ava Chair

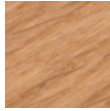
Available materials

Version: 20-9-2024

Base, seat and backrest | Oak



Oiled
1015
White oil



Oiled
1505
Natural oil



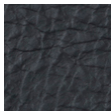
Oiled
163
Smoked oil



Lacquered
RAL 9005
Black

Upholstered seat | Leather

Dakar - by Leder Reinhard



0500
Black



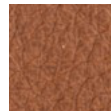
1258
Grey



1436
Stone



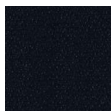
3411
Nature



2732
Whisky

Upholstered seat | Fabric

Era - by Camira



CSE14
Forward



CSE13
Present



CSE45
Prompt



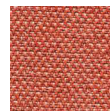
CSE42
Range



CSE20
Aeon



CSE16
Timelapse



CSE26
Turn



CSE03
Lifetime

Main line flax - by Camira



MLF16
Temple



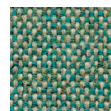
MLF20
Upminster



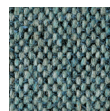
MLF02
Archway



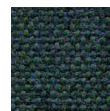
MLF10
Newbury



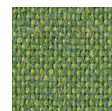
MLF24
Bayswater



MLF22
Westminster



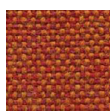
MLF32
Greenford



MLF18
Tufnell



MLF17
Tooting



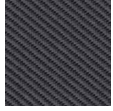
MLF13
Leyton

Ava Chair

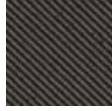
Available materials

Version: 20-9-2024

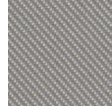
Relate - by Kvadrat



0171



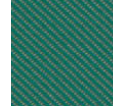
0181



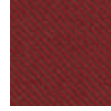
0111



0771



0961



0671

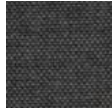


0431

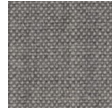
Remix - by Kvadrat



0753



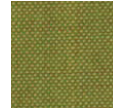
0163



0123



0823



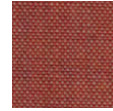
0912



0933



0612

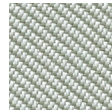
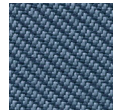
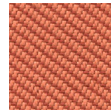
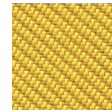


0632

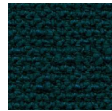
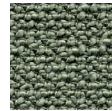
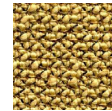


0762

Oceanic - by Camira

OOC01
FlotsamOOC08
BayOOC14
RiptideOOC13
PaddleOOC11
NeptuneOOC05
CoralOOC07
Barrier

Yoredale - by Camira

UDA08
GayleUDA25
LeyburnUDA17
RibbleUDA04
HardrawUDA02
KidstoneUDA03
AskriggUDA05
Simonstone

Vidar - by Kvadrat



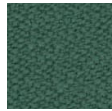
0182



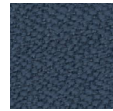
0133



0222



0943



0733



0872



0582



0472